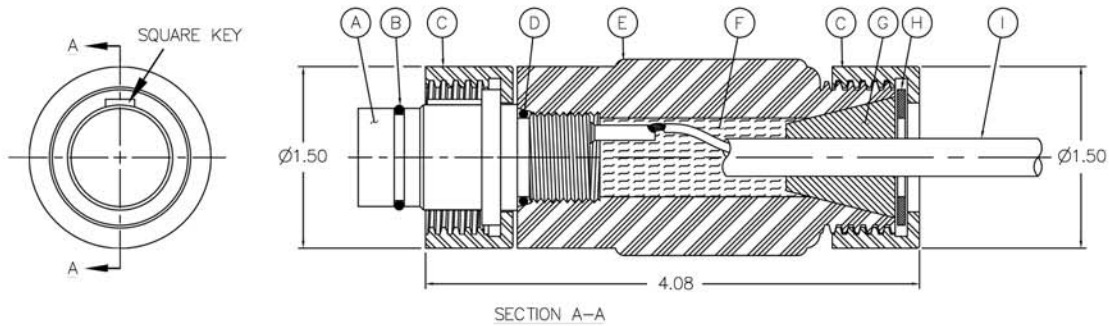


GRE FIELD INSTALLABLE SERIES XSL-CCP-FI

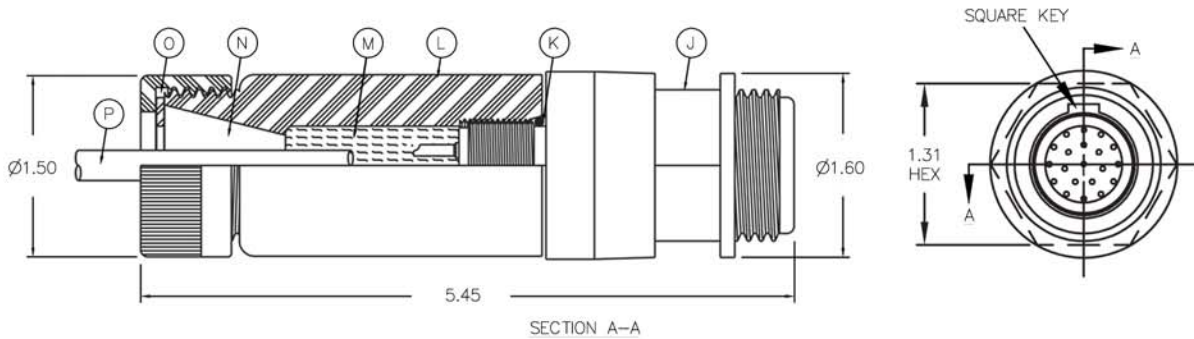
GRE Cable Connector Plug
Mates with XSL-BCR/CCR & MSXL-BCR & XSL-CCR-FI
Dummy Connector: XSL-DSR



A - CONNECTOR BODY	B - O-RING	C - ENGAGING NUT	D - O-RING	E	F	G	H	I
XSL-CCP-FI	2-017	DELRIN®*	2-114	XSL-FI HOUSING	POTTING COMPOUND	XSL-FI GROMMET	XSL-FI WASHER	CABLE

GRE FIELD INSTALLABLE SERIES XSL-CCR-FI

GRE Cable Connector Receptacle
Mates with XSL-CCP & XSL-CCP-FI
Dummy Connector: XSL-DSP



J - CONNECTOR BODY	K	L	M	N	O	P
XSL-CCR-FI	2-114	XSL-FI HOUSING	POTTING COMPOUND	XSL-FI GROMMET	XSL-FI WASHER	CABLE

NOTES:

- This field installable series is available in XSL and XSM sizes. Available as complete kits if desired including connector bodies, component hardware and pre-packaged, ready-to-use injection material. (Cables available on request). Designed for in-the-field assembly - applications to offshore oil filled and oceanographic uses.
- Body: Glass Reinforced Epoxy B/A XS-2748.
- Contacts: Copper Alloy and Gold plated per MIL-G-45204.
- O-ring: Nitrile (formerly known as Buna N).
- Engaging Nut: Delrin® (DuPont trademark for Acetal Resin).
- Housing: Glass Reinforced Epoxy B/A XS-2748.
- Grommet: Neoprene.
- Washer: Delrin® (DuPont trademark for Acetal Resin).
- Cable (Neoprene or Polyurethane) should be cleaned and prepared prior to assembly to insure adhesion.
- Specifications:
 - Pressure: Atmospheric to 20,000 psi mated.
 - Temperature Range: -57°C to +93°C (-70°F to +200°F).
 - Maximum Cable Diameter: 0.62. Cable diameter must be specified at time of order.
- See page 20 for all contact configurations available.
- XSL series FI available thru to 12 contact configurations. Not available in 20 contact version.
- * DuPont trademark for Acetal Resin.

OPTIONS:

- Open face pressure resistance.
- Cable and molding is optional at additional cost.