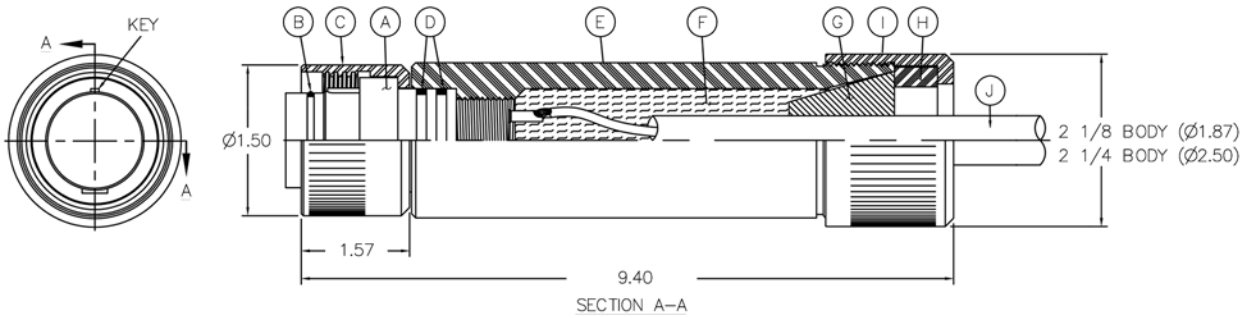


### GRE FIELD INSTALLABLE SERIES XSM-CCP-FI

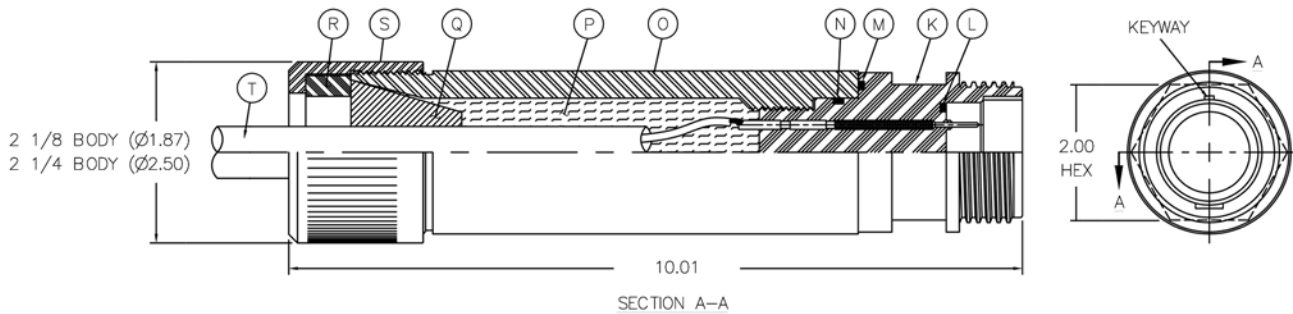
GRE Cable Connector Plug  
Mates with XSM-BCR/CCR & XSM-CCR-FI  
Dummy Connector: XSM-DSR



A - CONNECTOR BODY	B - O-RING	C - ENGAGING NUT	D - O-RING	E	F	G	H	I - TORQUE NUT	J - CABLE Ø (INCHES)
XSM-CCP-FI	2-026	STAINLESS STEEL	2-125	2 1/8 BODY XSM-FI HOUSING	POTTING COMPOUND	2 1/8 BODY XSM-FI GROMMET	2 1/8 BODY XSM-FI WASHER	MSSK E/N	< than 1.00
XSM-CCP-FI	2-026	STAINLESS STEEL	2-125	2 1/4 BODY XSM-FI HOUSING	POTTING COMPOUND	2 1/4 BODY XSM-FI GROMMET	2 1/4 BODY XSM-FI WASHER	MSSM E/N	1.00 - 1.37

### GRE FIELD INSTALLABLE SERIES XSM-CCR-FI

GRE Cable Connector Receptacle  
Mates with XSM-CCP & XSM-CCP-FI  
Dummy Connector: XSM-DSP



K - CONNECTOR BODY	L - O-RING	M - O-RING	N - O-RING	O	P	Q	R	S - TORQUE NUT	T - CABLE Ø (INCHES)
XSM-CCP-FI	2-122	2-132	2-125	2 1/8 BODY XSM-FI HOUSING	POTTING COMPOUND	2 1/8 BODY XSM-FI GROMMET	2 1/8 BODY XSM-FI WASHER	MSSK E/N	< than 1.00
XSM-CCP-FI	2-122	2-132	2-125	2 1/4 BODY XSM-FI HOUSING	POTTING COMPOUND	2 1/4 BODY XSM-FI GROMMET	2 1/4 BODY XSM-FI WASHER	MSSM E/N	1.00 - 1.37

**NOTES:**

- This field installable series is available in XSL and XSM sizes. Available as complete kits if desired including connector bodies, component hardware and pre-packaged, ready-to-use injection material. (Cables available on request). Designed for in-the-field assembly - applications to offshore oil filled and oceanographic uses.
- Body: Glass Reinforced Epoxy B/A XS-2748.
- Contacts: Copper Alloy and Gold plated per MIL-G-45204.
- O-ring: Nitrile (formerly known as Buna N).
- Engaging Nut: 316 Stainless Steel (XSM-CCP-FI) / Delrin® (DuPont trademark for Acetal Resin) (XSM-CCR-FI).
- Housing: Delrin® (DuPont trademark for Acetal Resin).
- Grommet: Neoprene.
- Washer: Delrin® (DuPont trademark for Acetal Resin).
- Cable (Neoprene or Polyurethane) should be cleaned and prepared prior to assembly to insure adhesion.
- Specifications:
  - Pressure: Atmospheric to 10,000 psi mated.
  - Temperature Range: -57°C to +93°C (-70°F to +200°F).
  - Maximum Cable Diameter: Please see table above. Cable diameter must be specified at time of order.
- See page 20 for all contact configurations available.

**OPTIONS:**

- Open face pressure resistance.
- Cable and molding is optional at additional cost.