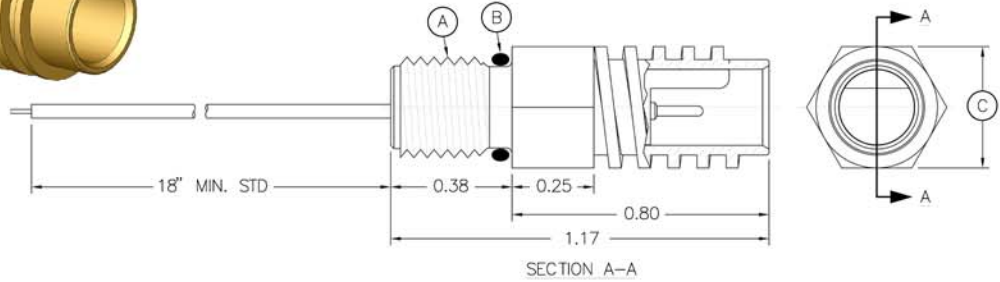
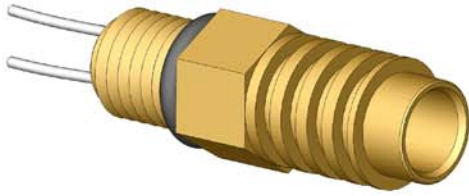
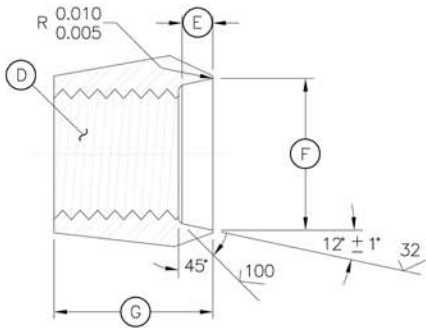


HUMMER SERIES HUM-BCR SAE*

HUMMER Bulkhead Connector Receptacle
Mates with HUM-CCP
Dummy Connector: HUM-DSP



CONNECTOR	A - SAE THREAD	B - O-RING	C - HEX FLATS (INCHES)
HUMG-BCR	5/16-24 UNF-2A	3-902	0.37
HUMK-BCR	3/8-24 UNF-2A	3-903	0.50
HUML-BCR	1/2-20 UNF-2A	3-905	0.62

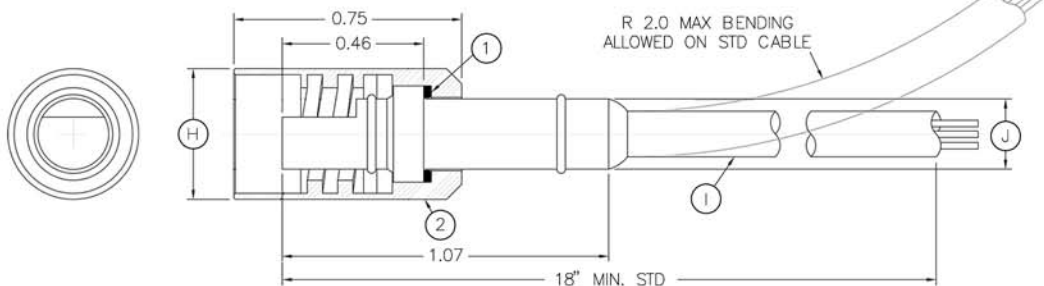


MOUNTING INFORMATION

CONNECTOR	D - SAE THREAD	E - (INCHES)	F - Ø (INCHES)	G - (INCHES)
HUMG-BCR	5/16-24 UNF-2B	0.074 + 0.010 - 0.005	0.363 0.358	0.38
HUMK-BCR	3/8-24 UNF-2B	0.074 + 0.010 - 0.000	0.426 0.421	0.43
HUML-BCR	1/2-20 UNF-2B	0.093 + 0.010 - 0.000	0.555 0.550	0.43

HUMMER SERIES HUM-CCP

HUMMER Cable Connector Plug
Mates with HUM-BCR
Dummy Connector: HUM-DSR



CONNECTOR	H - Ø (INCHES)	I - MAX CABLE Ø (INCHES)	J - Ø (INCHES)
HUMG-CCP	0.43	0.187	0.23
HUMK-CCP	0.56	0.275	0.35
HUML-CCP	0.69	0.375	0.48

NOTES:

1. Locking sleeve washer - Delrin® (DuPont trademark for Acetal Resin).
2. Locking sleeve - Brass (shown above as a cost option) or Delrin® (DuPont trademark for Acetal Resin).

* Reference SAE J1926.

Connectors are designed for installation on one atmosphere vessels. Contact SEA CON® for recommendations if using compensated vessels.