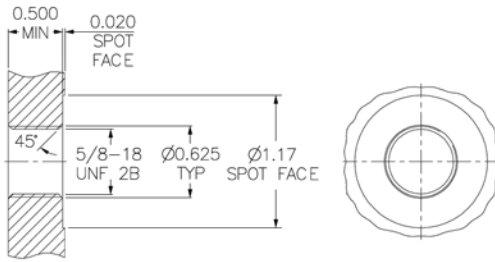


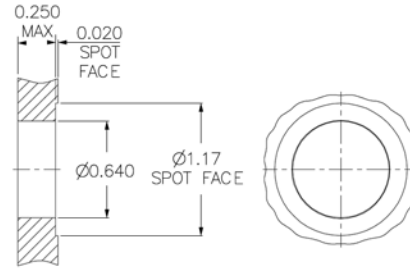
**OPTI-CON SERIES  
OPT-BCR SINGLE-WAY  
THREADED MOUNTING OPTION**

OPTI-CON Bulkhead Connector Receptacle  
Mates with OPT-CCP



**OPTI-CON SERIES  
OPT-BCR SINGLE-WAY  
THROUGH BORE MOUNTING OPTION**

OPTI-CON Bulkhead Connector Receptacle  
Mates with CCP

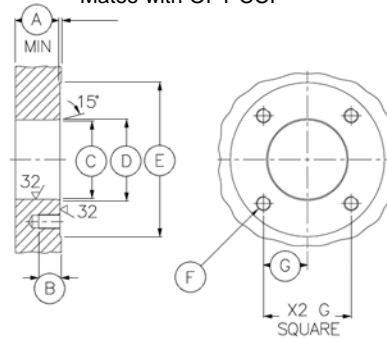


**NOTES:**

· Single-Way Bulkhead Mounting Torque: 85 inch pounds.

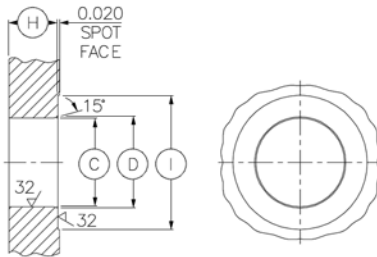
**OPTI-CON SERIES  
OPT-FCR  
MOUNTING OPTION**

OPTI-CON Flange Connector Receptacle  
Mates with OPT-CCP



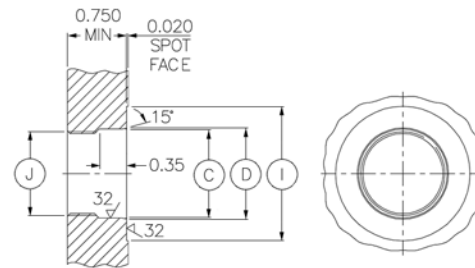
**OPTI-CON SERIES  
OPT-BCR  
THROUGH BORE MOUNTING OPTION  
UTILIZING BACK NUT AND WASHER**

OPTI-CON Bulkhead Connector Receptacle  
Mates with OPT-CCP



**OPTI-CON SERIES  
OPT-BCR  
THREADED MOUNTING OPTION**

OPTI-CON Bulkhead Connector Receptacle  
Mates with OPT-CCP



**FCR / BCR INTERFACE THREADED MOUNTING INFORMATION**

CONNECTOR	A - (INCHES)	B - (INCHES)	C - Ø (INCHES)	D - Ø (INCHES)	E - SPOT FACE Ø (INCHES)	F - THREAD	G - (INCHES)	H - Ø (INCHES)	I - Ø (INCHES)	J - THREAD	MOUNTING TORQUE (INCH POUNDS)
OPT-G-4-FCR / BCR	0.480	0.30	0.868 0.870	0.900	1.875	M4	0.540	0.710 0.400	1.500	13/16-20 UNEF 2B	125
OPT-M-8-FCR / BCR	0.630	0.30	1.123 1.125	1.154	2.180	M5	0.620	0.620 0.400	1.700	1 1/16-20 UN 2B	175
OPT-Q-12-FCR / BCR	0.830	0.48	1.623 1.625	1.654	2.860	M6	0.825	0.620 0.400	2.200	1 9/16-20 UN 2B	200
OPT-T-20-FCR / BCR	0.830	0.48	1.998 2.000	2.029	3.380	M6	1.000	0.620 0.400	2.575	1 15/16-20 UN 2B	250

**NOTES:**

· \* These torque values are based on clean, dry, non-lubricated threads and as new condition 316L Stainless Steel connector and interface.