

PEEK 55 SERIES CONNECTOR



PEEK 55 Series Connector

DESCRIPTION

Developed as an addition to the SEACON well proven 55 Series. This connector was designed to meet the ever increasing demands of material selection. The material selection was chosen to eliminate any corrosion/delamination and weight reduction issues but without compromising connector performance.

KEY FEATURES

- An addition to the proven SEACON 55 connector series
- Light weight
- Wide temperature rating
- Not affected by corrosion or cathodic delamination
- Superior chemical resistance
- Excellent electrical properties
- Outstanding hydrolysis resistance
- Excellent wear and abrasion resistance
- Industry standard compatibility

DESIGN SPECIFICATION

- Max working pressure 10,000 psi (mated or unmated)
- Voltage (standard): 600 VDC/440 VAC
- Current (maximum): 18 amps dependant on contact and cable conductor size



SEACON (europe) LTD PRODUCT DATASHEET

MATERIALS

- Connector shell (standard): PEEK (Polyetheretherketone)
- Engaging nut (standard): PEEK (Polyetheretherketone)
- Pin contact: Copper Alloy. Gold Plated per MIL-G-45204
- Socket contact: insert. Copper Alloy. Gold Plated per MIL-G-45204. Incorporates Multilam™
- Connector body (standard): Neoprene
- Bulkhead Tails (options): Specification 44, #16 AWG Silver plated, Copper wire
- Connector body (options): Nitrile, Hypalon. Others available upon request
- Overmould (standard): Neoprene
- Overmould (standard): Nitrile, Hypalon. Others available upon request
- Cable (standard): Neoprene
- Cable (options): Polyurethane, Polyethylene. Others available upon request
- Bulkhead Tails (standard): P.T.F.E. insulated, #16 AWG Silver plated, Copper wire

CONFIGURATIONS

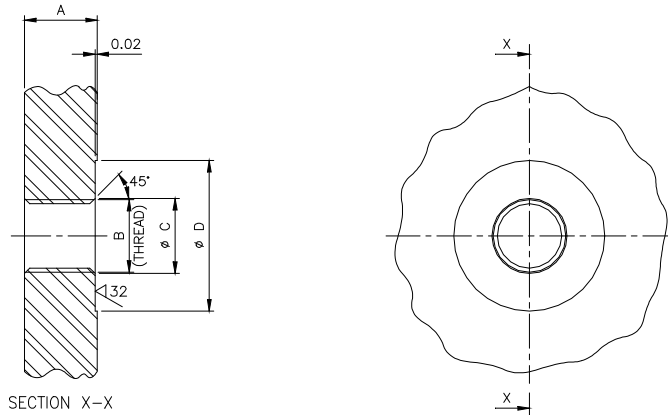
- 01 = CCP (cable plug)
- 02 = CCR (cable receptacle)
- 06 = FCR (panel mount receptacle)
- 07 = BCR (bulkhead receptacle)
- A1 = CCP / AT (attachable cable plug)
- A2 = CCR / AT (attachable cable receptacle)
- R1 = CCP / RA (right angle plug)
- R2 = CCR / RA (right angle receptacle)

QUALITY

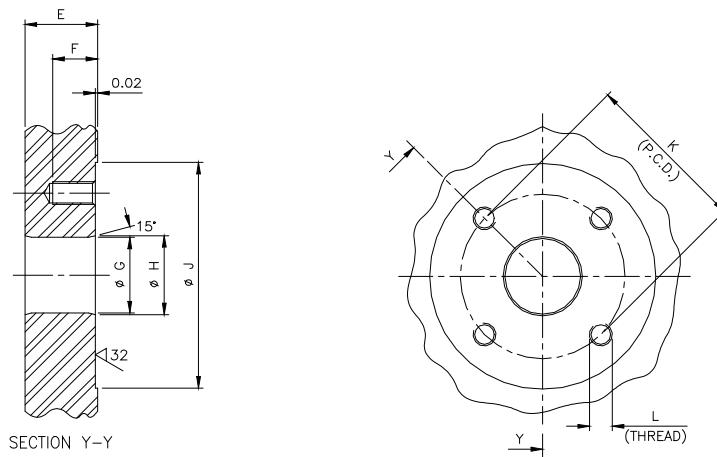
- SEACON (europe) Ltd operate a Quality Management System accredited to ISO 9001.



INTERFACE DATA



Bulkhead Connector Interface
(5507 Series BCR)



Panel Mount Connector Interface
(5506 Series FCR)

SHELL SIZE	A	B	ØC	ØD	E	F	ØG	ØH	ØJ	K	L
15	0.5	5/8-18 UNF	0.68	1.30	0.45	0.315	0.65	0.68	1.94	1.414	M5x0.8 6H
20	0.5	¾ -16 UNF	0.79	1.44	0.50	0.375	0.77	0.79	2.28	1.768	M6x1 6H
24	0.5	1-14 UNS	1.05	1.73	0.50	0.375	1.02	1.04	2.63	2.121	M6x1 6H
32	0.5	1 ½-12 UNF	1.55	2.31	0.625	0.50	1.52	1.54	3.50	2.828	M8x1.25 6H



SEACON (europe) LTD
PRODUCT DATASHEET

AVAILABLE FACE CONFIGURATIONS

Note View On Plug Connector Front Face



55**-1502



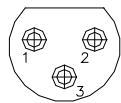
55**-1503



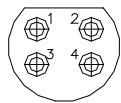
55**-1504



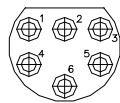
55**-1508



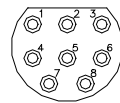
55**-2003



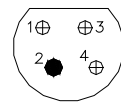
55**-2004



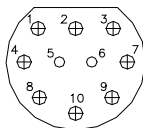
55**-2006



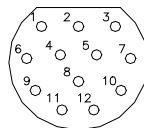
55**-2008



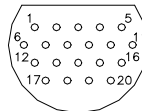
559**-2004



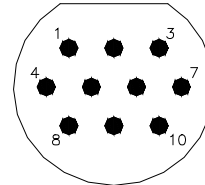
55**-2410



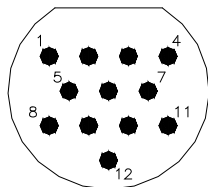
55**-2412



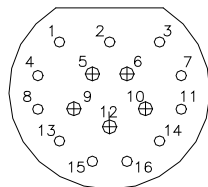
55**-2420



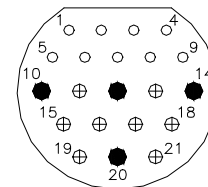
55**-3210



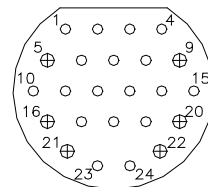
55**-3212



55**-3216



55**-3221



55**-3224

Pin Diameter	1/16 ⌀	3/32 O	1/8 ⊕	5/32 ●
Wire Accomodation	18	16	16	12

All reasonable efforts have been taken to ensure that the information contained herein is accurate at the date of publication, but no representation or warranty as to the accuracy or completeness of such information is intended or to be implied by its inclusion herein. Any and all representations and warranties pertaining to the information and products referred to herein shall be set forth in SEACON standard sales order form. In addition, SEACON reserves the right to make changes to the contents hereof without notice, therefore it is suggested that at the time of inquiry, the appropriate sales office or factory be contacted directly for verification of published specifications and products availability.

© 2014 SEACON (europe) Ltd
 ALL RIGHTS RESERVED

