

## SINGLE CONTACT FIBRE OPTIC CONNECTOR



*Single Contact Fibre Optic Connectors*

### DESCRIPTION

The single fibre optic range of connectors are available in a number of body materials including PEEK®, 316 Stainless Steel, Hard Anodised Aluminium & Titanium. They are available with either single-mode or multi-mode fibre and have excellent optic properties.

### KEY FEATURES

- Small size and weight
- Keyed and non-keyed shell designs
- High pressure rating
- Excellent optic properties
- Dry mateable
- Single-mode or multi-mode fibre
- Connector bodies available in PEEK®, 316 Stainless Steel, Hard Anodised Aluminium & Titanium

### DESIGN SPECIFICATION

- Max working pressure 517 bar (7,500 psi) 316 Stainless Steel & Titanium bodied connectors mated
- Max working pressure 250 bar (3,623 psi) Aluminium & PEEK® bodied connectors mated
- Max continuous working temperature +70°C (158°F)
- Min continuous working temperature -50°C (-58°F)
- Optical insertion loss <0.5dB typically <0.3dB
- Optical back reflection typically <-25dB @ 1310nm & 1550nm using single-mode fibre



## SEACON (europe) LTD PRODUCT DATASHEET

### MATERIALS

- BCR body in PEEK®, 316 Stainless Steel, Aluminium & Titanium
- O-ring seals in Nitrile
- BCR uses jacketed fibre
- Boots in natural rubber
- CCP body in PEEK®, 316 Stainless Steel, Aluminium & Titanium
- Locking sleeve in Delrin® (DuPont trademark for Acetal Resin) or Ally bronze NES 833
- CCP overmould in PU (Alternatives available to meet different specifications and/or special fluid compatibility requirements)
- CCP cable is a military tactical cable with a PU jacket (Alternatives available to meet different specifications and/or special fluid compatibility requirements)

### CONFIGURATION

- PK-1-FO-BCR (PEEK® threaded bulkhead receptacle) & PK-1-FO-CCP (PEEK® free half plug)
- SS-1-FO-BCR (316 SS threaded bulkhead receptacle) & SS-1-FO-CCP (316 SS free half plug)
- AL-1-FO-BCR (Aluminium threaded bulkhead receptacle) & AL-1-FO-CCP (Aluminium free half plug)
- TI-1-FO-BCR (Titanium threaded bulkhead receptacle) & TI-1-FO-CCP (Titanium free half plug)
- See Page 3 for overall dimensions (The overall dimensions are the same for all body materials)

### QUALIFICATION

- A pair of connectors has successfully been laboratory tested to 690 bar (10,000 psi)

### QUALITY

- SEACON (europe) Ltd operate a Quality Management System accredited to ISO 9001.



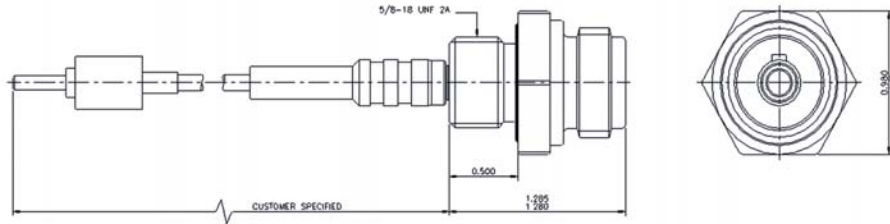


Figure 1 - BCR

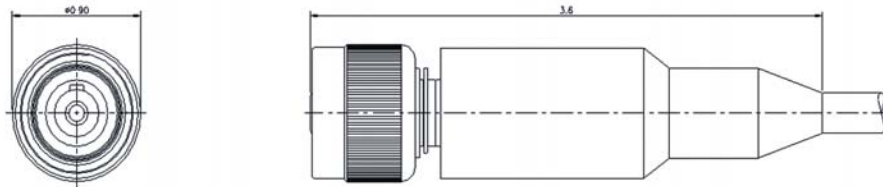


Figure 2 - CCP

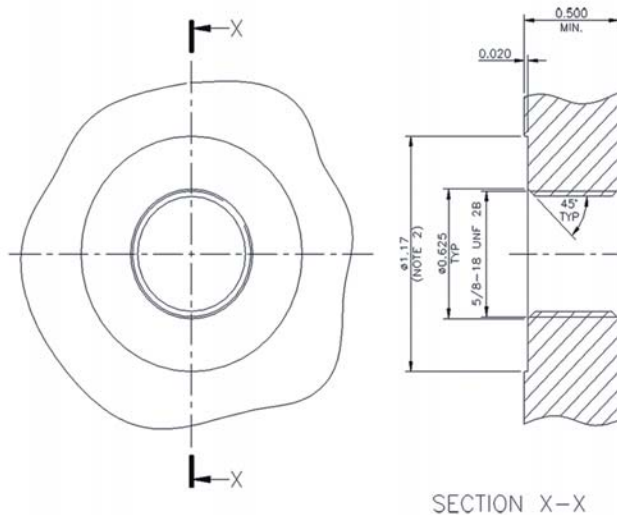


Figure 3 - Interface

All reasonable efforts have been taken to ensure that the information contained herein is accurate at the date of publication, but no representation or warranty as to the accuracy or completeness of such information is intended or to be implied by its inclusion herein. Any and all representations and warranties pertaining to the information and products referred to herein shall be set forth in SEACON standard sales order form. In addition, SEACON reserves the right to make changes to the contents hereof without notice, therefore it is suggested that at the time of inquiry, the appropriate sales office or factory be contacted directly for verification of published specifications and products availability.

© 2014 SEACON (europe) Ltd  
ALL RIGHTS RESERVED