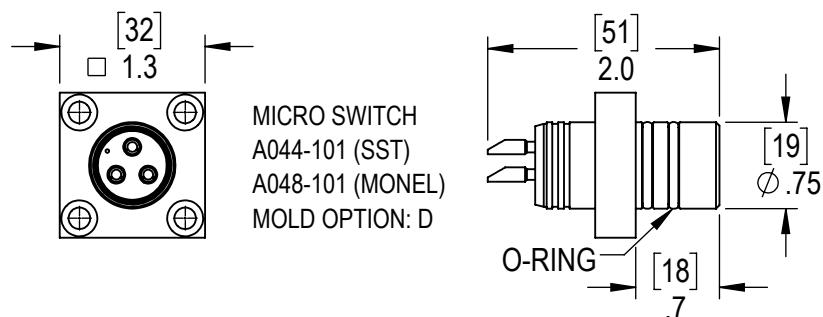
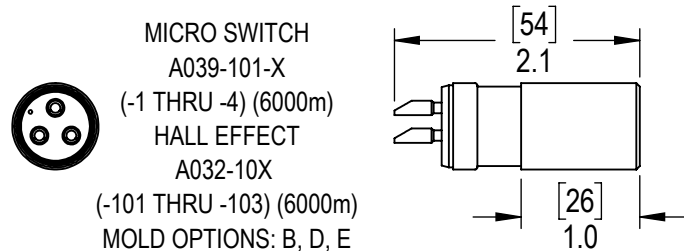
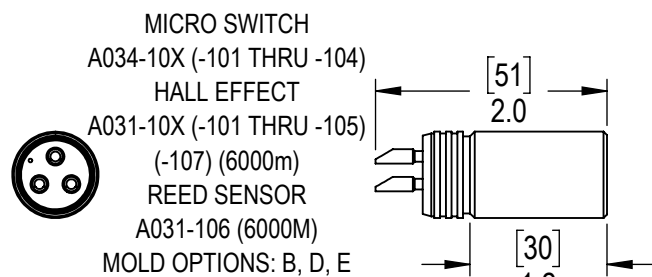
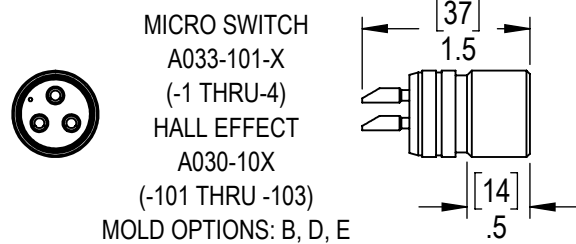


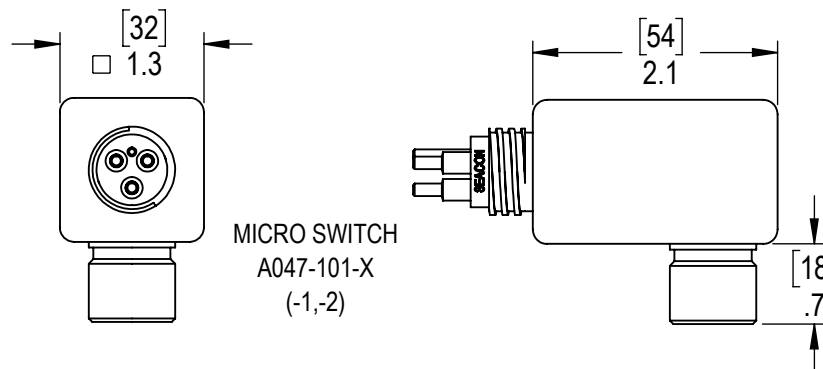
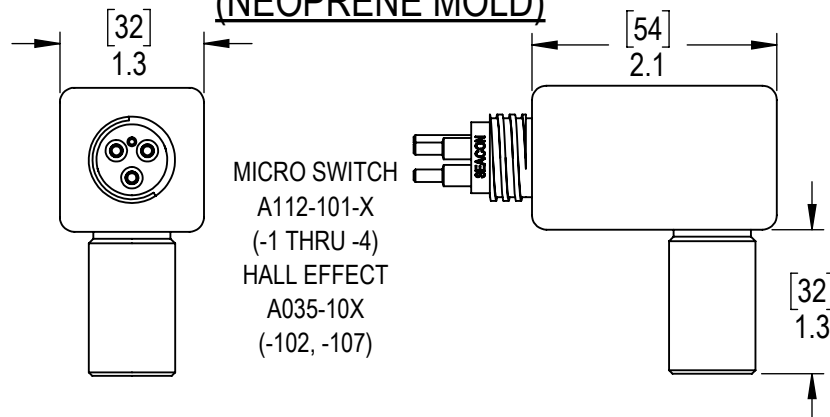
SEACON PROXIMITY SWITCH

FOR ADDITIONAL INFORMATION SEND REQUEST TO bellvillesales@te.com

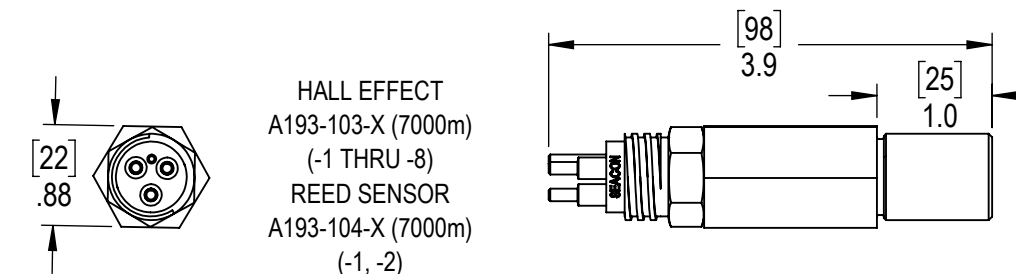
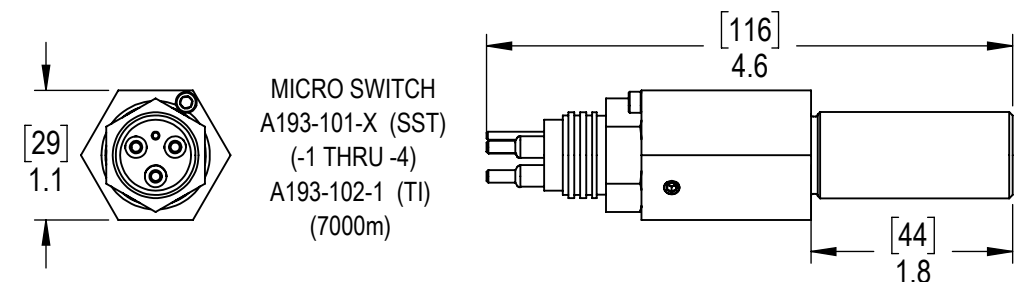
MOLDED CABLE (AU SERIES)



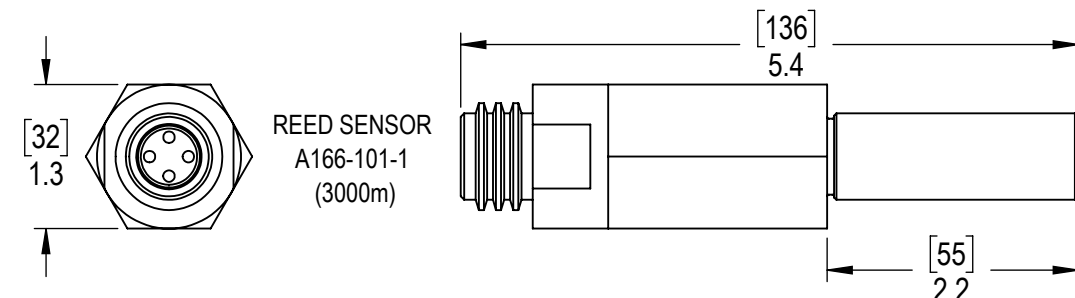
MODULAR RIGHT ANGLE WITH MCBH-3M CONNECTOR (NEOPRENE MOLD)



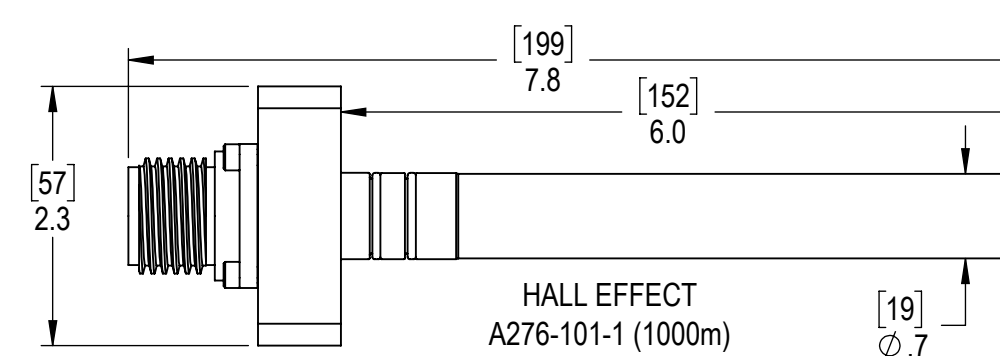
MODULAR STRAIGHT WITH MCBH-3M CONNECTOR



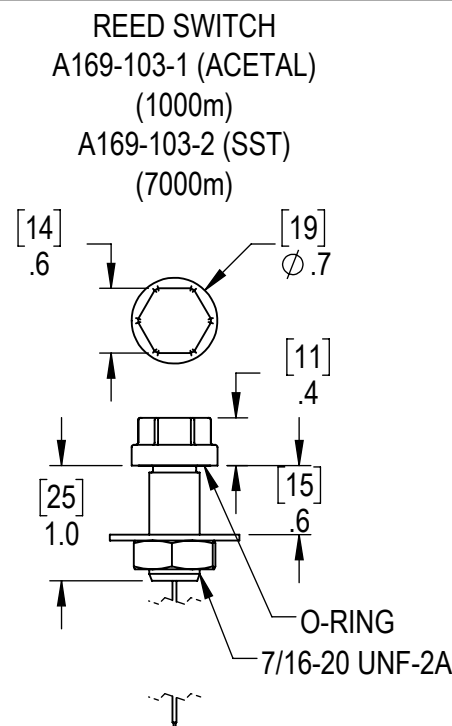
MODULAR STRAIGHT WITH GRE CONNECTOR



MODULAR STRAIGHT WITH MINK4FCRL CONNECTOR



BULKHEAD PROXIMITY SENSOR



FEATURES:

- MICRO SWITCH, 115 VAC/28 VDC, 7 AMP OR 1 AMP MAX RESISTIVE LOAD
- HALL EFFECT, AVAILABLE AS SINKING, RATIOMETRIC (SOURCING) OR LATCHING
- REED SWITCH AVAILABLE AS SHOWN
- HOUSING MATERIAL 316 SST, OPTIONAL MATERIAL TITANIUM AND MONEL
- MOUNTING THREAD 3/4-16 UNF-2A, UNLESS SPECIFIED OTHERWISE
- TYPICAL 3600 METER OPERATING DEPTH, WITH OPTIONS TO 7000m
- CUSTOM DESIGNS AVAILABLE
- X= CONFIGURATION OPTIONS

FOR REFERENCE ONLY

COPYRIGHT© SEACON ADVANCED PRODUCTS LLC
SEACON ADVANCED PRODUCTS LLC
 1321 NELIUS RD. - BELLVILLE, TEXAS - 77418

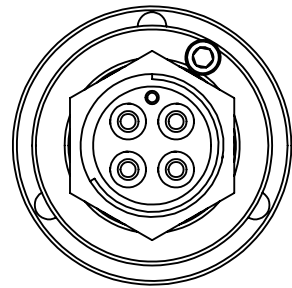
UNDERWATER SWITCH SALES DRAWING

SIZE B	CAGE NO. 4EAN5	DWG NO. A130-104-1	REV B
DO NOT SCALE DRAWING		SCALE 3:5	SHEET 1 OF 7

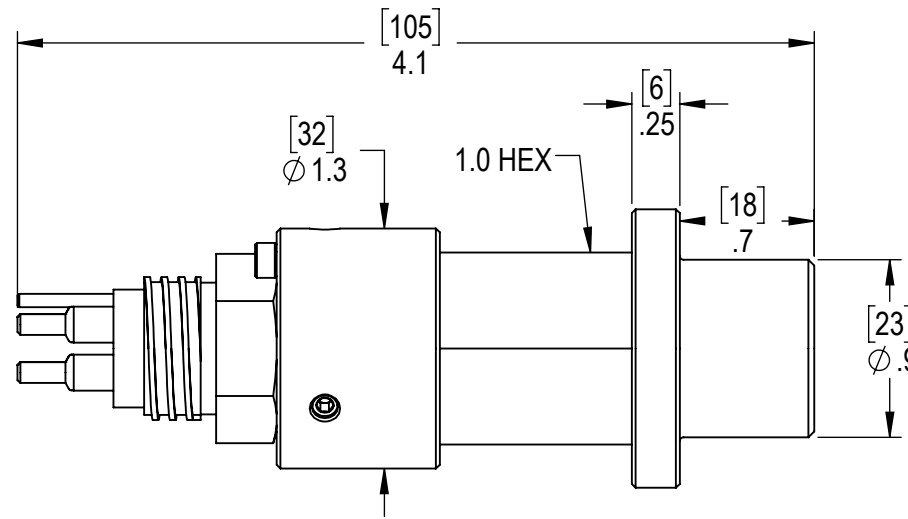


SEACON DUAL SWITCH PROXIMITY SWITCH

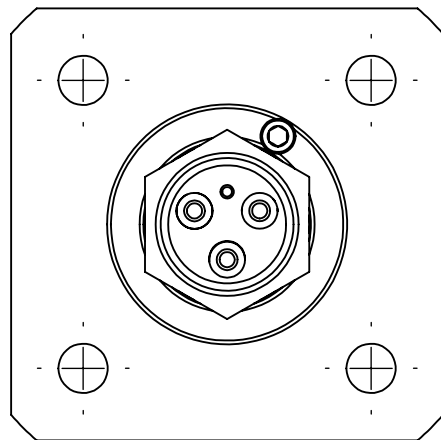
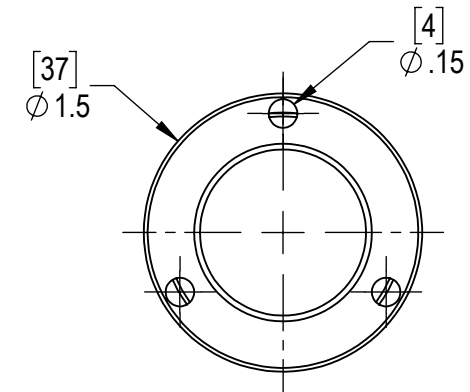
FOR ADDITIONAL INFORMATION SEND REQUEST TO bellvillesales@te.com



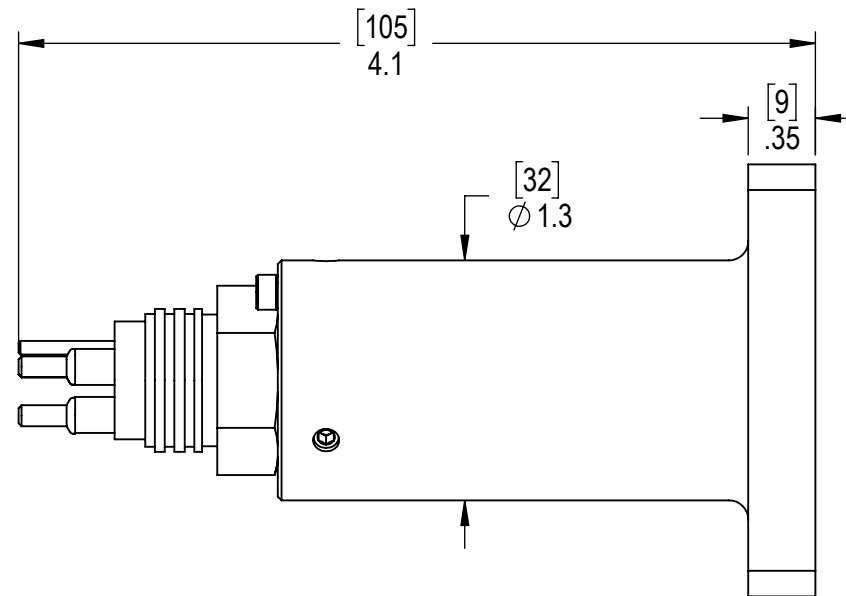
MCBH-4M-DO AND MCBH-4F-DO CONNECTOR STANDARD
(OTHER MCBH CONNECTORS AVAILABLE)



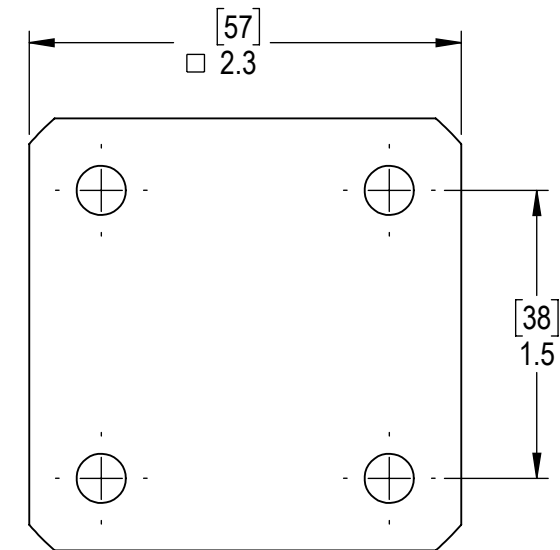
A040-101-X
(4200m DEPTH)



MCBH-3M-DO CONNECTOR STANDARD
(OTHER MCBH CONNECTORS AVAILABLE)



A040-102-X
(1000m DEPTH)




FOR REFERENCE ONLY

FEATURES:

- DUAL MICRO SWITCH, 115 VAC/28 VDC, 7 AMP OR 1 AMP MAX RESISTIVE LOAD
- HOUSING MATERIAL 316 SST, OPTIONAL MATERIAL TITANIUM AND MONEL
- OPERATING DEPTH AS SPECIFIED
- DESIGNED FOR HIGH SHOCK
- CUSTOM DESIGNS AVAILABLE
- X= CONFIGURATION OPTIONS

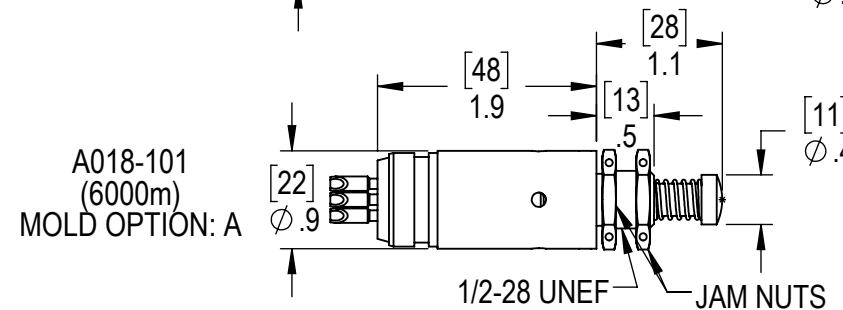
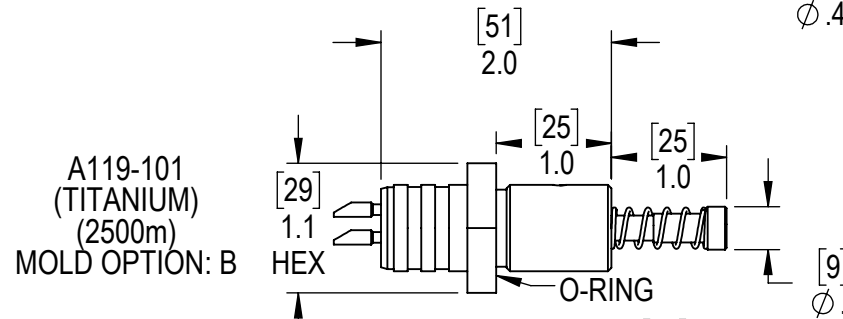
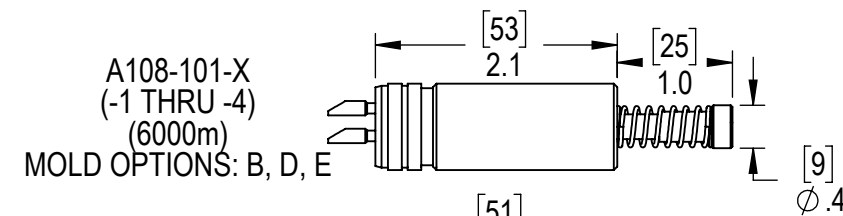
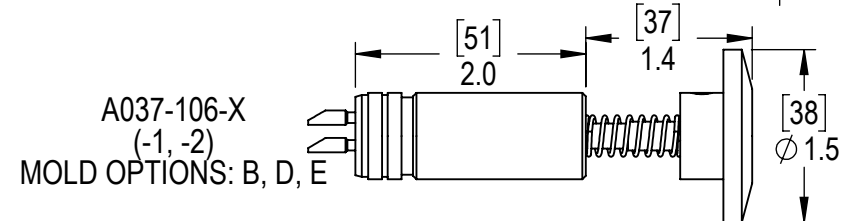
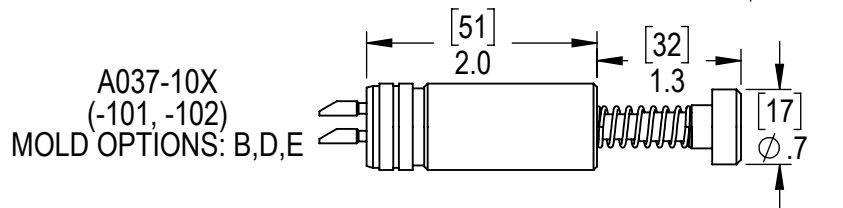
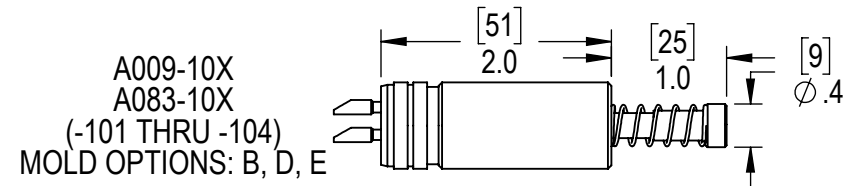
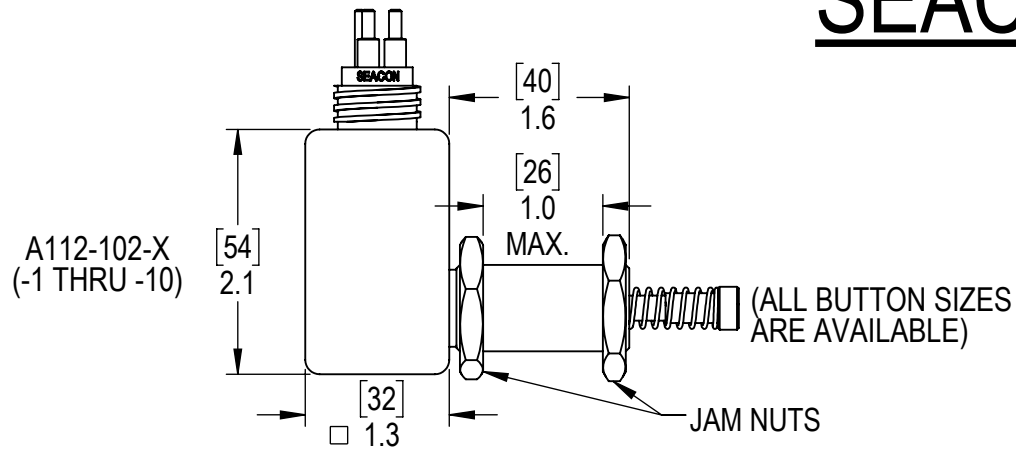


COPYRIGHT© SEACON ADVANCED PRODUCTS LLC			
 SEACON ADVANCED PRODUCTS LLC 1321 NELIUS RD. - BELLVILLE, TEXAS - 77418			
UNDERWATER SWITCH SALES DRAWING			
SIZE B	CAGE NO. 4EAN5	DWG NO. A130-104-2	REV B
DO NOT SCALE DRAWING		SCALE 1:1	SOLIDWORKS SHEET 2 OF 7

SEACON MOLDED CABLE SWITCHES

FOR ADDITIONAL INFORMATION SEND REQUEST TO bellvillesales@te.com

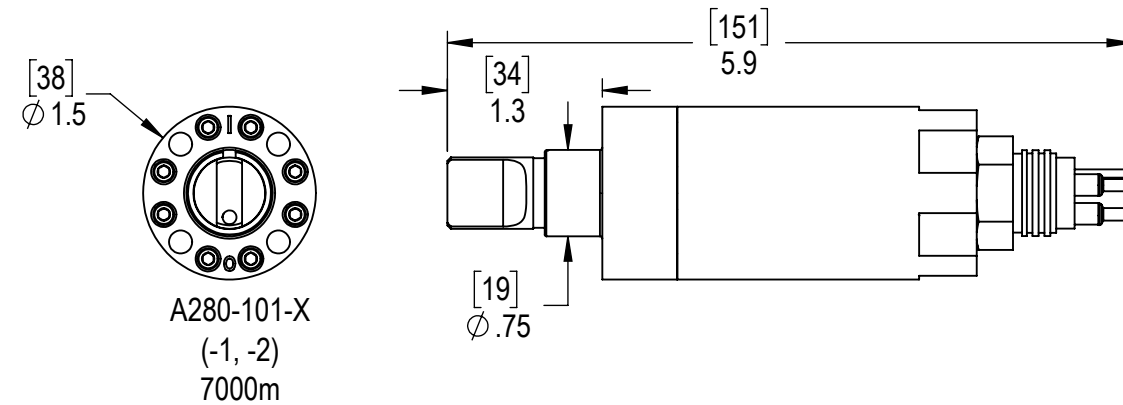
MOMENTARY SWITCH



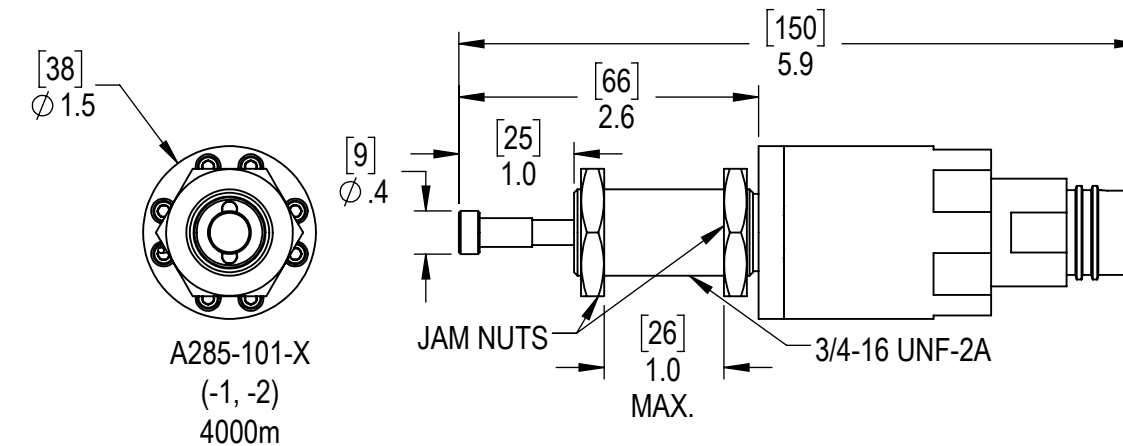
FEATURES:

- MICRO SWITCH, 115 VAC/28 VDC, 7 AMP OR 1 AMP MAX RESISTIVE LOAD
- HOUSING MATERIAL 316 SST, OPTIONAL MATERIAL TITANIUM AND ACETAL
- MOUNTING THREAD 3/4-16 UNF-2A, UNLESS SPECIFIED OTHERWISE
- TYPICAL 3600 METER OPERATING DEPTH, WITH OPTIONS 165m TO 7000m
- CUSTOM DESIGNS AVAILABLE
- SEE DRAWING A130-104-7 FOR NEOPRENE MOLD OPTIONS
- X= CONFIGURATION OPTIONS

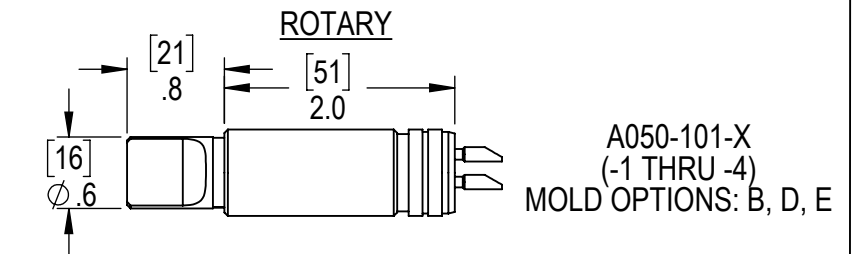
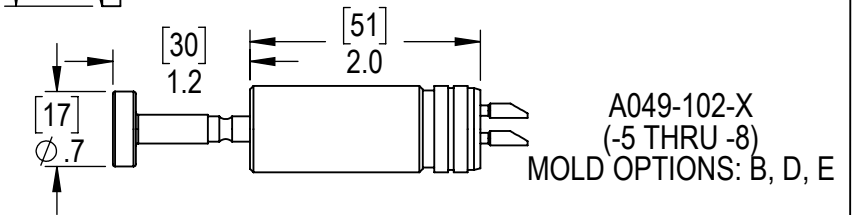
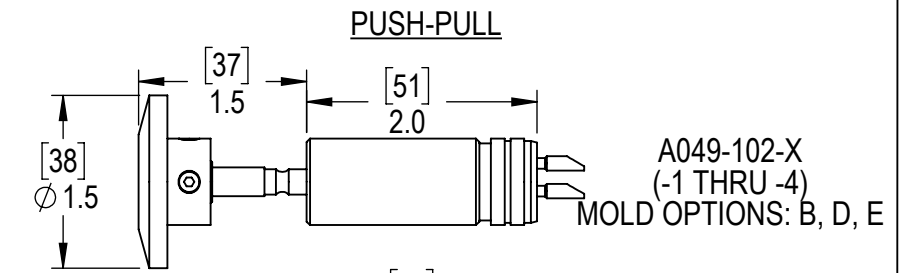
ROTARY SWITCH (PANEL MOUNT) WITH MCBH-3M CONNECTOR



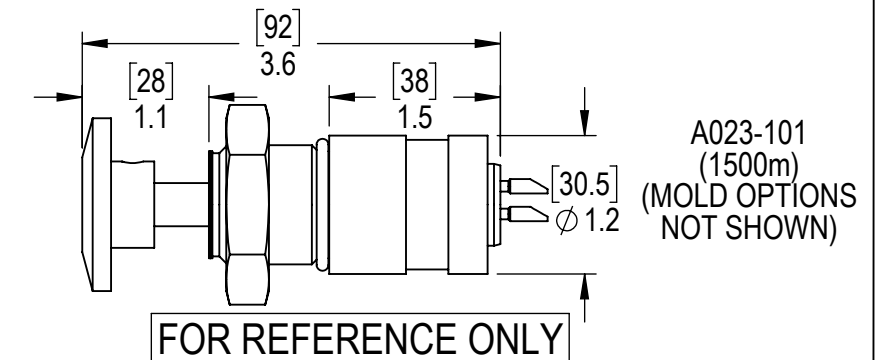
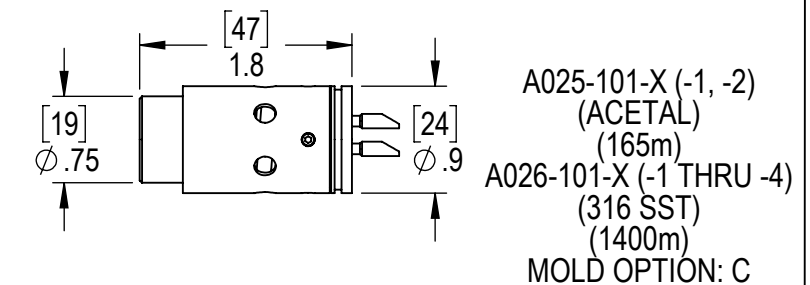
MOMENTARY SWITCH (TITANIUM) W/ GRE CONNECTOR



POSITIVE ACTION SWITCH



MOMENTARY SWITCH



COPYRIGHT© SEACON ADVANCED PRODUCTS LLC			
SEACON ADVANCED PRODUCTS LLC 1321 NELIUS RD. - BELLVILLE, TEXAS - 77418			
UNDERWATER SWITCH SALES DRAWING			
SIZE B	CAGE NO. 4EAN5	DWG NO. A130-104-3	REV B
DO NOT SCALE DRAWING		SCALE 3:5	SHEET 3 OF 7

SEACON BULKHEAD MOUNTED SWITCHES

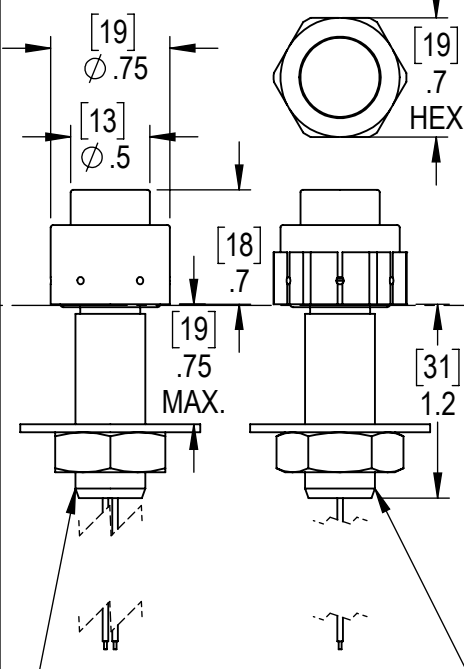
FOR ADDITIONAL INFORMATION SEND REQUEST TO bellvillesales@te.com

FEATURES:

- MICRO SWITCH, 115 VAC/28 VDC, 7 AMP OR 1 AMP MAX RESISTIVE LOAD
- REED SWITCH AVAILABLE AS SHOWN
- HOUSING MATERIAL 316 SST, OPTIONAL MATERIAL TITANIUM AND ACETAL
- 1.1" HEX HOUSING HAS DUAL O-RING SEAL, FACE AND RADIAL
- A169 SERIES HAS FACE O-RING SEAL ONLY
- MOUNTING THREAD 3/4-16 UNF-2A, UNLESS SPECIFIED OTHERWISE
- TYPICAL 3600 METER OPERATING DEPTH, WITH OPTIONS 1000m TO 7000m
- CUSTOM DESIGNS AVAILABLE
- X= CONFIGURATION OPTIONS

MOMENTARY REED SWITCH

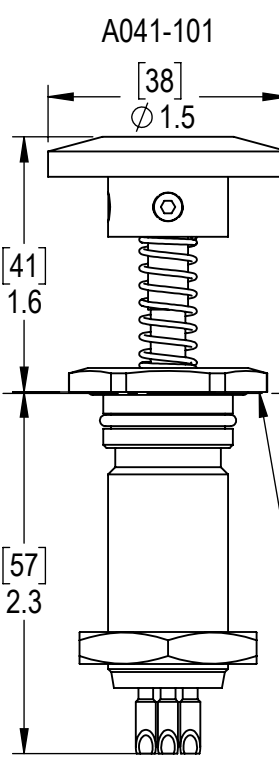
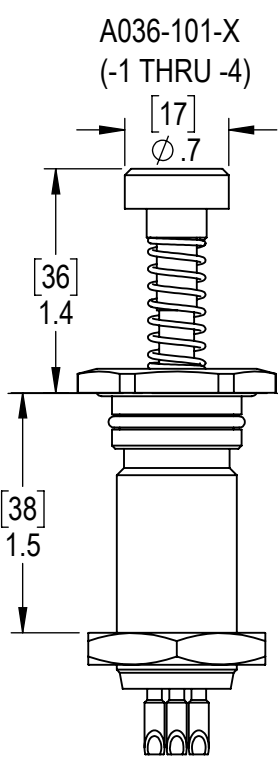
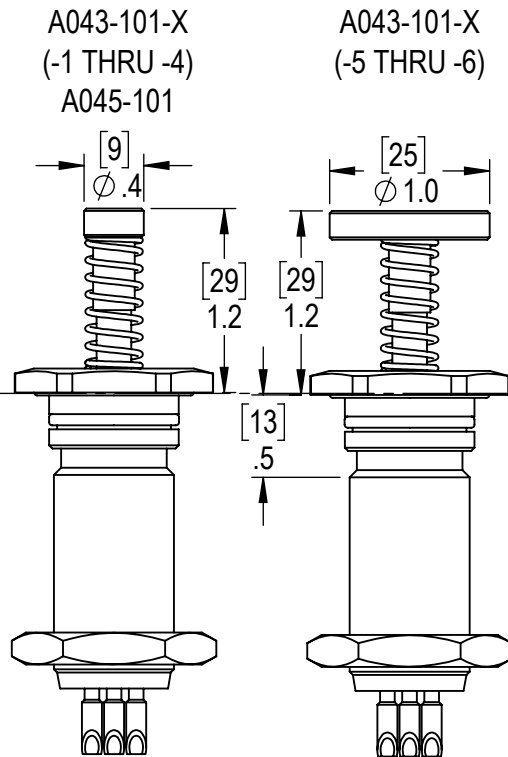
A169-101-1 (ACETAL) (1000m)
A169-101-2 (7000m)
A169-101-3 (ACETAL) (1000m)
A169-101-4 (7000m)



7/16-20 UNF-2A
(FOR THROUGH HOLE APPLICATIONS ONLY)

7/16-20 UNF-2A
(FOR THREADED OR THROUGH HOLE INSTALLATIONS)

MOMENTARY



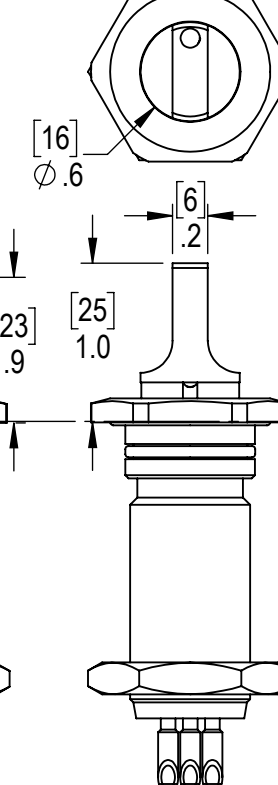
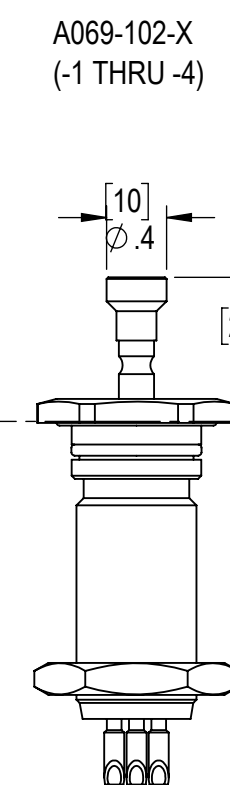
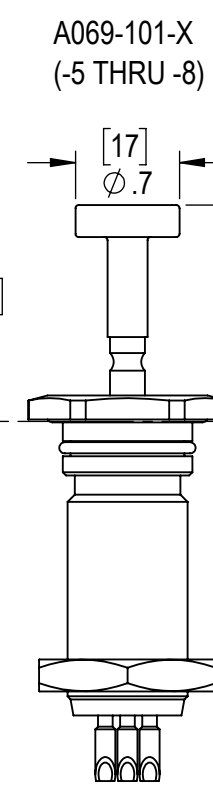
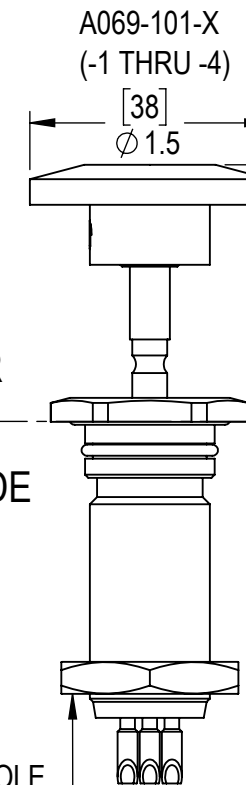
SEAWATER

AIR (DRY) SIDE

[29] 1.1 HEX (TYP)

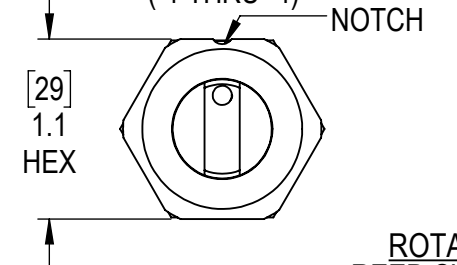
JAM NUT
(FOR THROUGH HOLE INSTALLATIONS)

PUSH-PULL



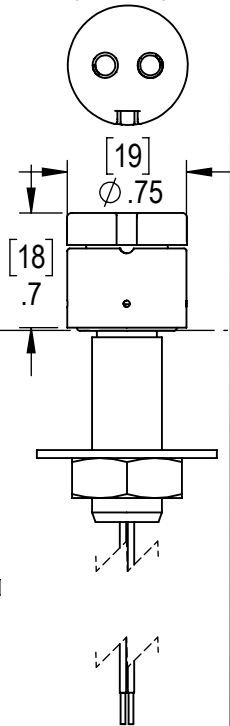
ROTARY

A006-102-X (-1 THRU -4)



ROTARY REED SWITCH

A169-102-1 (ACETAL) (1000m)
A169-102-2 (7000m)



FOR REFERENCE ONLY

COPYRIGHT© SEACON ADVANCED PRODUCTS LLC



SEACON ADVANCED PRODUCTS LLC

1321 NELIUS RD. - BELLVILLE, TEXAS - 77418

UNDERWATER SWITCH SALES DRAWING

SIZE B	CAGE NO. 4EAN5	DWG NO. A130-104-4	REV B
DO NOT SCALE DRAWING		SCALE 5:6	SHEET 4 OF 7



SEACON PROXIMITY SWITCH ACTUATORS

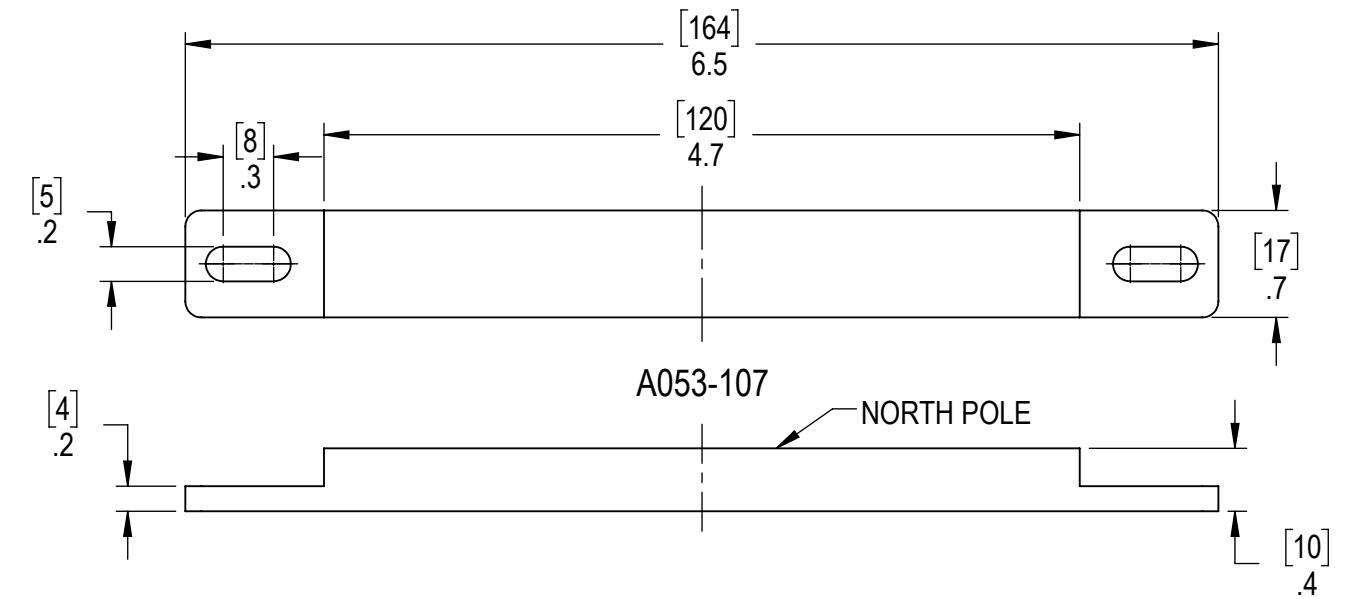
FOR ADDITIONAL INFORMATION SEND REQUEST TO bellvillesales@te.com

FEATURES:

- MAGNETS ARE SAMARIUM COBALT FOR MAXIMUM CORROSION RESISTANCE
- MAGNETS ARE ENCAPSULATED IN EPOXY IN ALL ACTUATOR ASSEMBLIES
- HOUSING MATERIAL 316 SST, OPTIONAL MATERIAL TITANIUM
- AVAILABLE AS NORTH OR SOUTH POLE ACTUATION, VERIFY THE CORRECT POLARITY FOR SELECTED SWITCH
- ACTUATORS ARE DESIGNED FOR SEAWATER USE TO 7000m
- PLUG STYLE MAGNETS DO NOT SEAL IN HOUSING, EXCEPT A053-105-X
- MAGNET SIZE AND STRENGTH DETERMINE PROXIMITY ACTUATION DISTANCE
- CONTACT SEACON FOR RECOMMENDED MAGNET FOR ACTUATION DISTANCE REQUIRED
- CUSTOM DESIGNS AVAILABLE
- X= CONFIGURATION OPTIONS

PROXIMITY SWITCH SHOWN FOR REFERENCE ONLY
SEE DRAWING A130-104-1 AND A130-104-2 FOR PROXIMITY SWITCH SELECTIONS

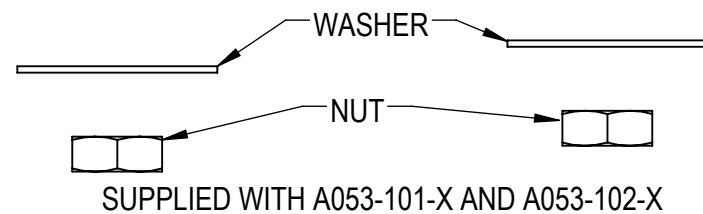
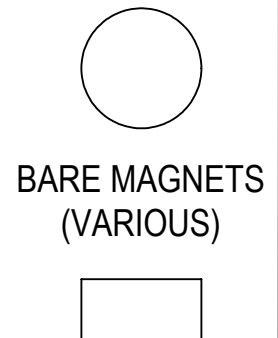
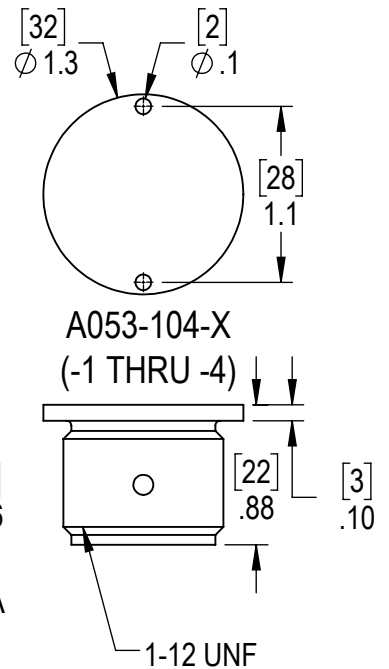
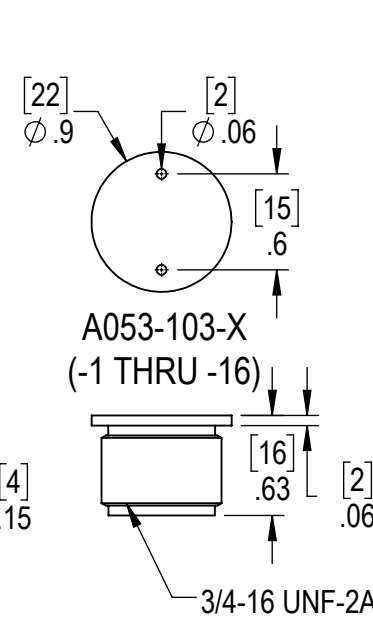
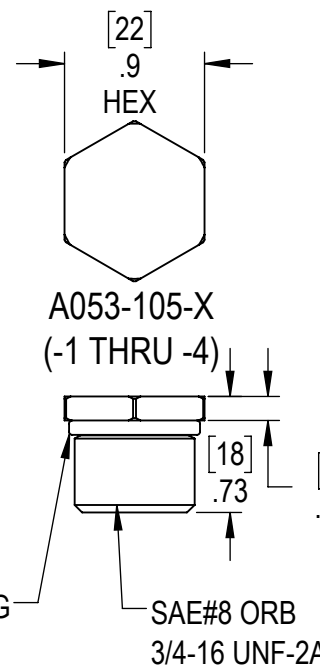
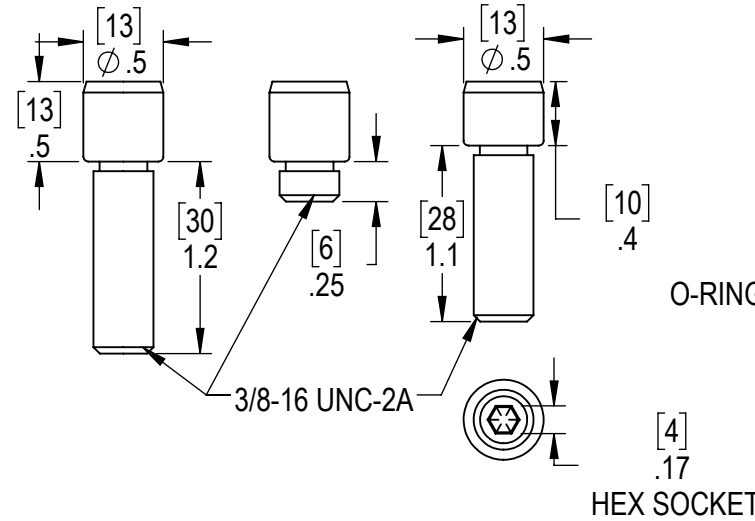
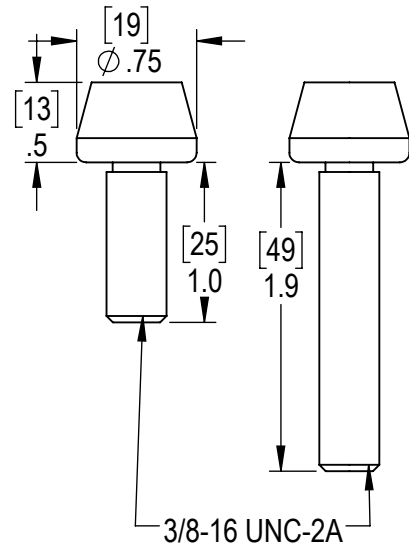
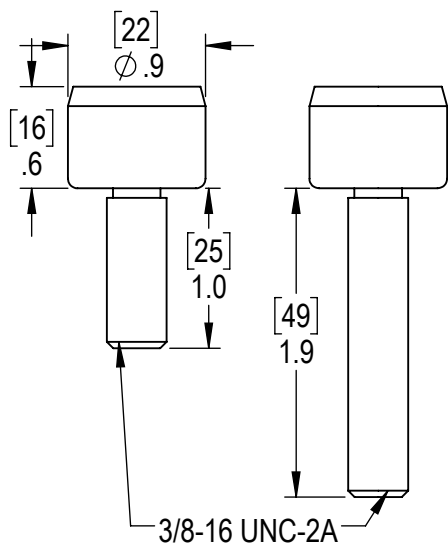
SENSING FACE



A053-101-X (-1,-2,-5,-6) A053-101-X (-3,-4,-7,-8)

A053-102-X (-1,-2) A053-102-X (-3,-4)

A053-106-X (-1 THRU -4) A053-106-X (-5 THRU 8) A053-106-X (-9 THRU -12)



FOR REFERENCE ONLY

COPYRIGHT© SEACON ADVANCED PRODUCTS LLC

SEACON ADVANCED PRODUCTS LLC
1321 NELIUS RD. - BELLVILLE, TEXAS - 77418

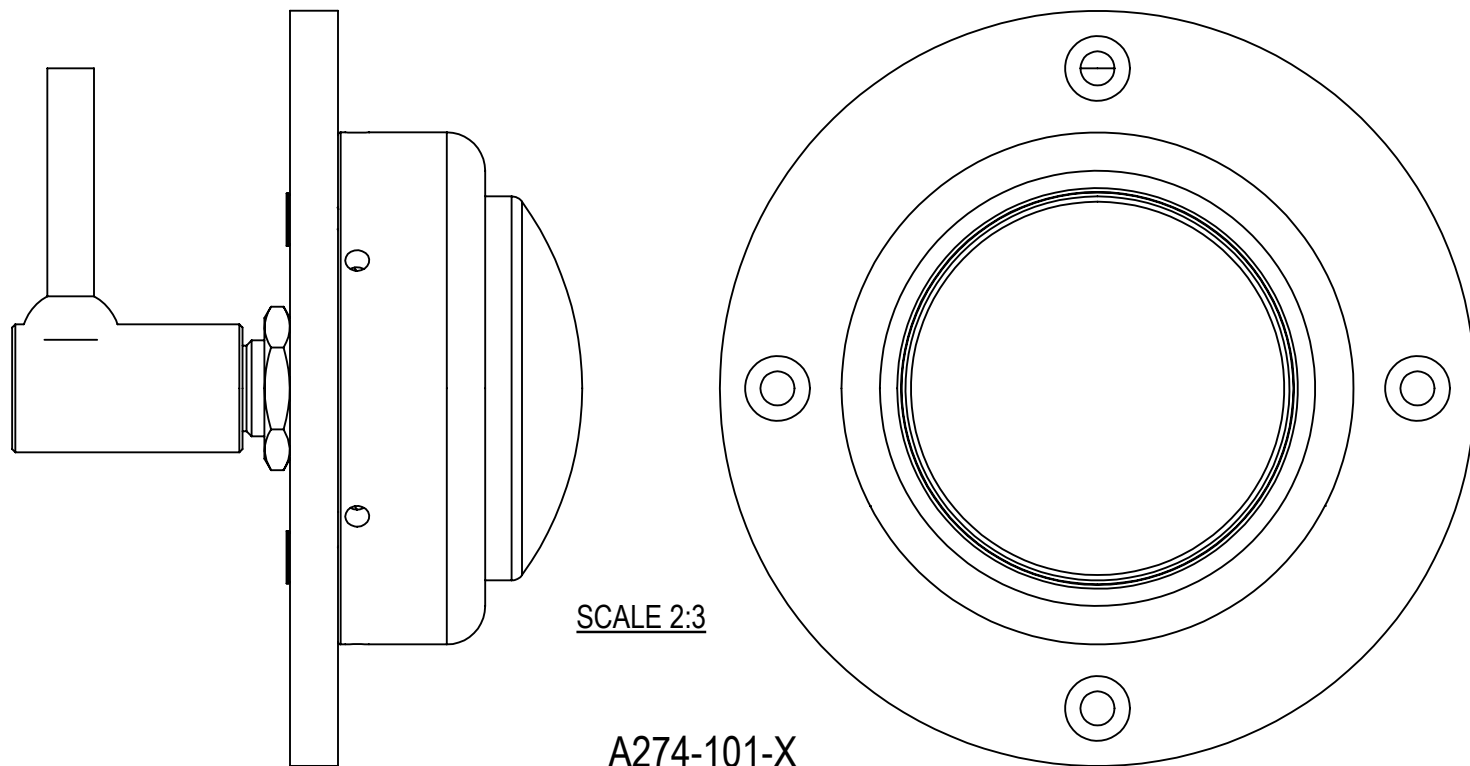
UNDERWATER SWITCH SALES DRAWING

SIZE B	CAGE NO. 4EAN5	DWG NO. A130-104-5	REV B
DO NOT SCALE DRAWING		SCALE 5:6	SHEET 5 OF 7



SEACON UNDERWATER SWITCH ACCESSORIES

FOR ADDITIONAL INFORMATION SEND REQUEST TO bellvillesales@te.com

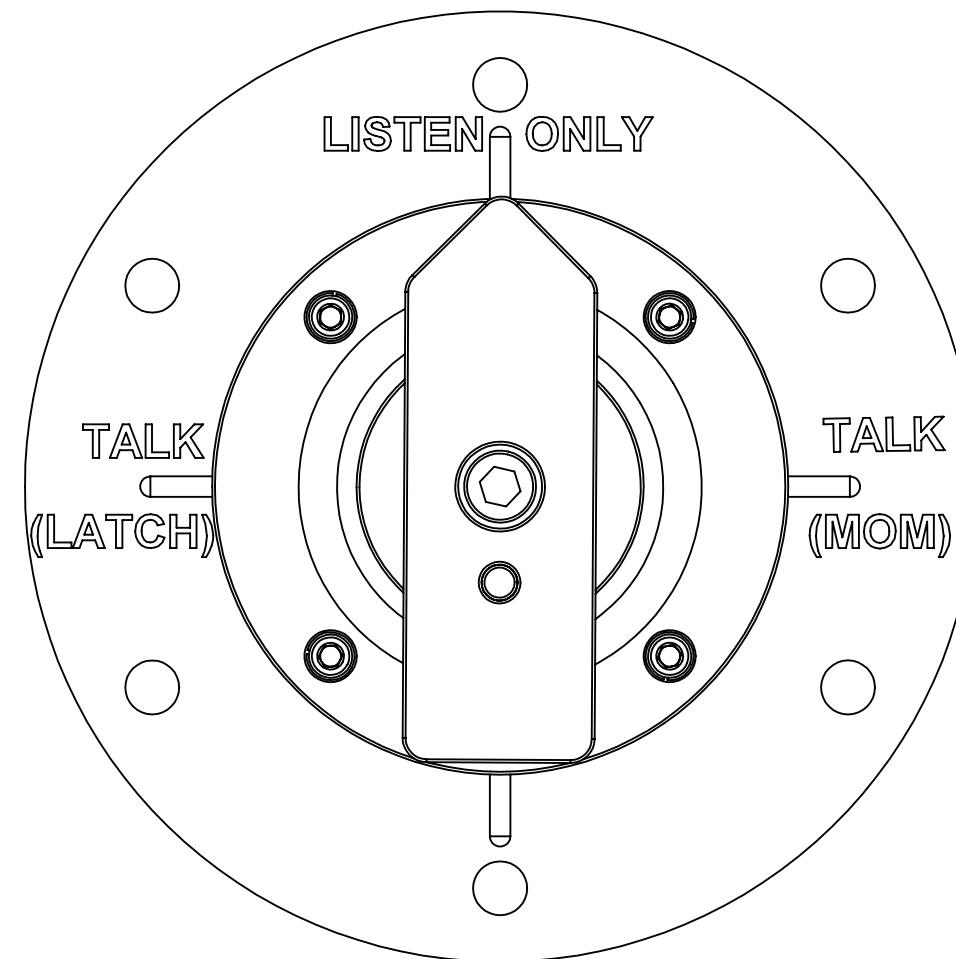


SCALE 2:3

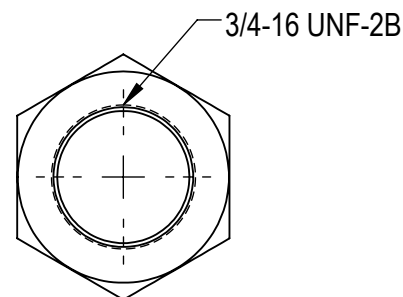
A274-101-X

3" PUSH BUTTON ASSEMBLY

FOR USE WITH MICRO SWITCH PROXIMITY SWITCH, SUPPLIED SEPARATELY



**EXAMPLE OF MULTIPLE POSITION DRIVER OPERATED SWITCH
CONTACT US FOR YOUR CUSTOM SWITCH REQUIREMENTS**



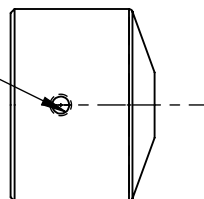
JAM NUTS

A000-180-1 (SST)

A000-180-2 (TI)

FOR USE WITH ALL SWITCHES
WITH 3/4-16 UNF-2A THREADS

#4-40 TAPPED HOLE, THRU
2 PL, 90° SPACING



LIMIT SWITCH BUTTON

A000-189 (SST)

FOR USE WITH SWITCHES:

A009-10X
A043-101-X
A045-101
A083-10X
A108-10X

FOR REFERENCE ONLY

COPYRIGHT© SEACON ADVANCED PRODUCTS LLC



SEACON ADVANCED PRODUCTS LLC

1321 NELIUS RD. - BELLVILLE, TEXAS - 77418

UNDERWATER SWITCH SALES DRAWING

SIZE B	CAGE NO. 4EAN5	DWG NO. A130-104-6	REV B
DO NOT SCALE DRAWING		SCALE 1:1	SOLIDWORKS SHEET 6 OF 7

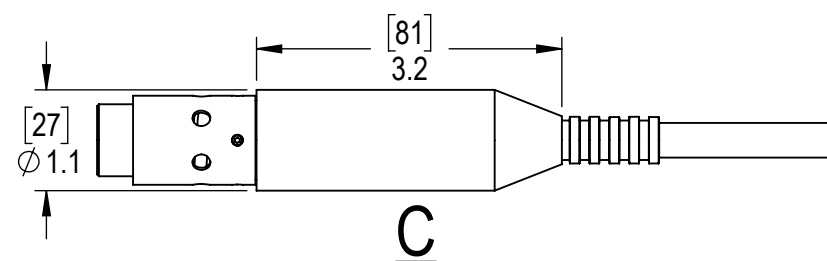
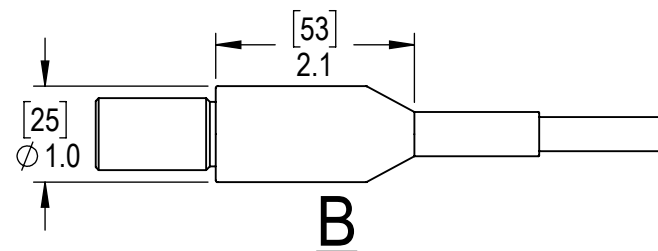
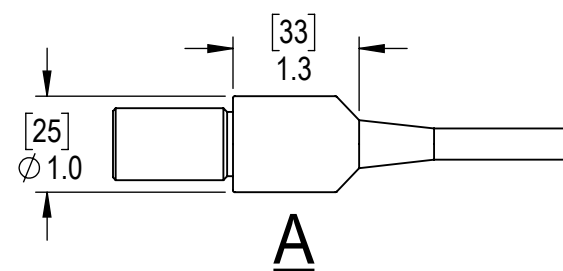


SEACON UNDERWATER SWITCH MOLD OPTIONS

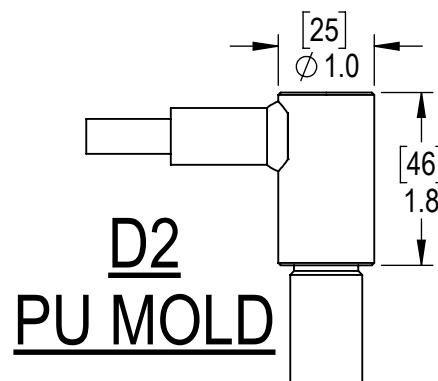
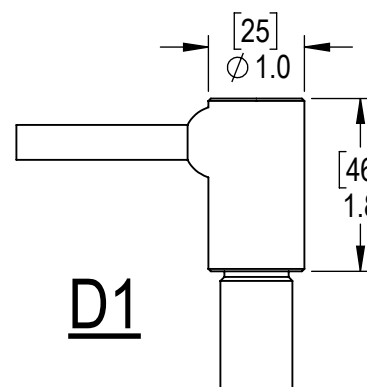
FOR ADDITIONAL INFORMATION SEND REQUEST TO bellvillesales@te.com

NOTES:

1. STANDARD MOLD IS NEOPRENE.
2. STANDARD CABLES, 18/3 AWG & 18/2 SOOW CABLES.
3. OTHER CABLES CAN BE MOLDED, WITH ENGINEERING APPROVAL.
4. SEACON CONNECTOR OPTIONS: ALL WET, WET-CON, AND MICRO WET-CON



STRAIGHT MOLDS

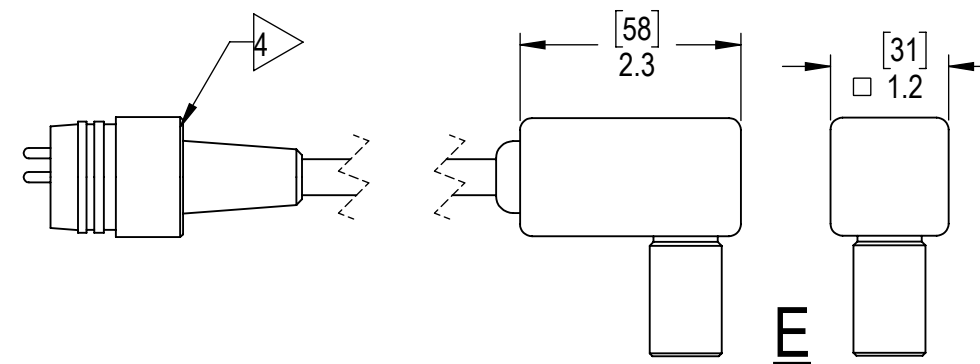


D2 PU MOLD

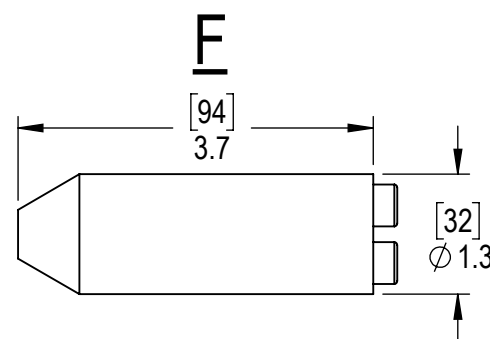
RIGHT ANGLE MOLD

MOLDS SUITABLE FOR THE FOLLOWING SWITCHES

- A- A018 SERIES
- B- ALL 3/4-16 UNF SWITCHES (EXCEPT BULKHEAD)
- C- A025 & A026 SERIES
- D1- ALL 3/4-16 UNF SWITCHES (EXCEPT BULKHEAD)
- D2- ALL 3/4-16 UNF SWITCHES (PU MOLD ONLY)
- E- ALL 3/4-16 UNF SWITCHES (EXCEPT BULKHEAD)
- F- FOR SPLICING 18/8 SOOW CABLE TO 2-18/3 SOOW CABLES




MODULAR RIGHT ANGLE MOLD



1 IN 2 OUT BARREL MOLD OPTION FOR CABLE ASSEMBLY

FOR REFERENCE ONLY

COPYRIGHT© SEACON ADVANCED PRODUCTS LLC			
 SEACON ADVANCED PRODUCTS LLC 1321 NELIUS RD. - BELLVILLE, TEXAS - 77418			
UNDERWATER SWITCH SALES DRAWING			
SIZE B	CAGE NO. 4EAN5	DWG NO. A130-104-7	REV B
DO NOT SCALE DRAWING		SCALE 1:2	SOLIDWORKS SHEET 7 OF 7

